

**The Society for the Arts in
Dementia Care (Australia) Inc.**

Presents:

The Power of Listening



"SISTERS" by Linda van der Merwe

Program and Brochure

Friday 5 June 2015

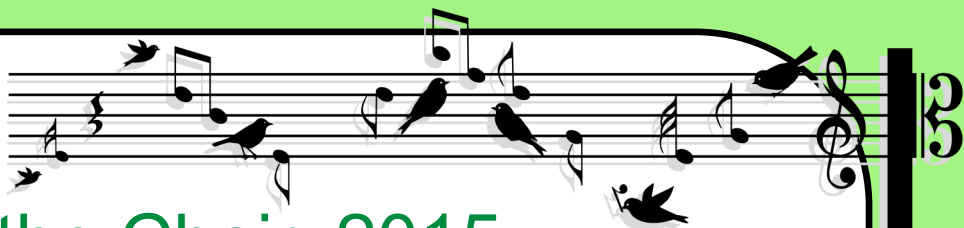
Technology Park Function Centre, Bentley, WA



Contents

Welcome by Hilary Lee	2
About the Society	3
Symposium Program	4
Speakers	5
Afternoon Workshop	7
Sponsors	8
Venue	9
Organisers	10





Welcome from the Chair, 2015



Hilary Lee, MSc OTR

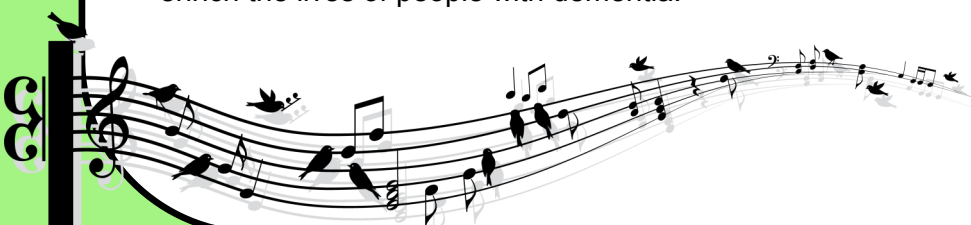
Chair & Founder: Society for the Arts in Dementia Care (Australia) Inc.

I'd like to extend a warm welcome to participants of The Society for the Arts in Dementia Care's 2015 Symposium 'The Power of Listening'. Our speakers' focus this year is on eliciting the strengths and potential in people with dementia through the power of skilful and focused listening, as well as finding new opportunities for meaningful expression through the arts, in diverse situations and settings.

We have a very varied and exciting program this year. Dr Ann Zubrick, who has a wealth of experience in ageing and pastoral care, will start the day with her insights about Listening as an Energiser. Anna Tang will bring the power of listening alive within a music therapy program and has a particular focus on techniques to reduce challenging behaviours, and Sandy Crowe, who is a *Spark of Life* Master Practitioner will show how she has been able to restore dormant language in people with dementia through listening with the heart. The afternoon is dedicated to a pioneering workshop (never done in dementia care before) with Ken Allen and his team in Junkadelic. This workshop is guaranteed to replenish the spirit, inspire and bring out the creativity and ability to improvise in all participants. Ken will show how the skills presented can be adapted to all clients, including older people with different levels of dementia.

The Society for the Arts in Dementia Care is a non-profit organisation dedicated to sharing knowledge and education to improve the quality of lives of older adults with dementia through the creative arts. Founded in 2005 by Dr Dalia Gottlieb-Tanaka, the head office is located in Vancouver, Canada. In 2006, I founded an affiliate to this Society here in Perth, Australia. The Society hosts workshops and conferences on Creative Expression, Communication and Dementia (CECD). This year's symposium will be the 8th such annual event in Australia since 2006.

I am sure this year's special event will be uplifting and revitalise you with heart-warming stories, as well as practical ideas for creative expression that you can take back and use to enrich the lives of people with dementia.





About the Society



The Society for the Arts in Dementia Care is built on the premise that older adults and people living with dementia have the right to dignity, to be heard and to be valued. The Society provides an interdisciplinary forum for creative expression with older adults by bringing together academic research and practical knowledge. The Society aims to disseminate knowledge and establish links with organisations with similar values worldwide, thereby improving the quality of life of older adults, especially those living with dementia.

The Society and its affiliates share these aims:

- To advocate for and support older adults and people living with dementia;
- To provide an interdisciplinary forum where all of us can meet to share recent findings and practical experiences, and collaborate on innovative approaches;
- To better understand dementia and how to cope with this condition using creativity;
- To increase awareness among artists, caregivers and political leaders of the importance of creative expression activities in health care; and
- To encourage artists to seek opportunities in therapeutic services and by doing so, enrich the pool of creative expression programs in dementia care.

AUSTRALIAN BOARD MEMBERS

The Society for the Arts in Dementia Care (Australia) Inc. is led by a small, but passionate group of individuals with a focus on embracing creative expression, by promoting the value and diversity of art in dementia care.

Hilary Lee, MSc, OTR, Founder, Chairperson

Jo Marshall, MBA, Treasurer, Symposium Coordinator

Trisha Kotai-Ewers, PhD, Secretary

Maree Pedaste, BAppSc (OT)

Norma Hachett, Creative Arts Facilitator

Jeni Winslow, OTR

Kate Campbell-Pope, OTR, multi-media professional artist

Dorothee Gevers, OTR



Symposium Program

Time	Information	Presenter	
9:00 – 9:30	Registration		
9:30 – 9:33	Housekeeping/OHS Acknowledgement of Country	Todd Young and William Phelps	Diploma students from Central Institute of Technology
9:33 – 9:45	Welcome Symposium Opening	Hilary Lee	MSc. OTR. Founder of the Society for the Arts in Dementia Care (Australia) Inc.
		Dr. Judy Edwards	CEO Sir James McCusker Foundation
9:45 – 10:00	Recorded Message Update from Japan after the Tsunami	Chizu Kinno	Director of Kesen-en Day Care Centre Facility since 2003, qualified instructor for Iwate Prefecture's Dementia Care training programs and Care Manager of training programs. Co-Author of the Rehabilitation Manual for Large Scale Disasters.
10:00 – 10:50	Keynote Speaker Powerful Listening as an Energizer: New ways of being and new ways of doing	Dr. Ann Zubrick	FACE, PhD, MA (Ageing and Pastoral Studies), LACST
10:50 – 11:20	Morning Tea		
11:20 – 12:00	When I grow too old to sing: Some simple yet powerful music therapy skills illustrated	Anna Tang	Agape Music Therapy Service
12:00 – 12:50	Restoring dormant language: Through listening with the heart	Sandy Crowe	<i>Spark of Life</i> Master Practitioner and Dementia Consultant at Southern Cross Care (WA) Inc
12:50 – 13:50	Lunch Break		
13:50 – 15:50	Workshop/Performance by Junkadelic: By re-envisaging 'Junk' as a resource for making instruments and applying it in a form of 'Edu-tainment', they break away from wasteful trends and help others to see that they are capable of doing their own thing in unison with others. Ken will inspire the audience to adapt this approach into aged care, showing what is possible with a little imagination and a little effort.	Ken Allen	Since 2002, the Junkadelic Collective has been taking Funk on Junk all over Western Australia and across the seas to Hong Kong.
15:50	Closing of Symposium	Hilary Lee	Founder of the Society for the Arts in Dementia Care (Australia) Inc.



Speakers

This Year's Keynote Speaker



Dr Ann Zubrick FACE, PhD, MA (Ageing and Pastoral Studies), LACST

Powerful Listening as an Energizer

Professionally Ann Zubrick's career spans both health and education. Her doctorate in life-course developmental psychology has given her a long standing interest in ageing. In a business, Re-Vision, Ann (and her colleague Dr Jane Figgis) explore with individuals, groups and communities the question: how can the years traditionally assigned to

'retirement' be rebalanced so that all older people continue to experience a sense of purpose and contribution?

Ann sits on a number of State and National boards and committees. She is an Adjunct Professor in the Centre for Ageing and Pastoral Studies at Charles Sturt University where she teaches courses related to the spiritual care of older people with dementia and mental illness.

She also regularly runs community education programs on different aspects of aging.

Sandy Crowe

Spark of Life Master Practitioner and Dementia Consultant at Southern Cross Care (WA) Inc

With a background in nursing and dementia consultancy, Sandy is taking her facility Margaret Hubery House on the journey to become Australia's first Centre of Excellence. With the support of CEO and Board members of Southern Cross Care (WA) Inc. (SCC), Sandy is currently implementing the internationally awarded Spark of Life Philosophy of care into this residential aged care facility, in Rossmoyne and also Tony Quinlan Respite Centre, in Hilton WA.

Sandy has 23 years experience in dementia care and has been employed by SCC for 13 years, the last 3 years being as Dementia Care Consultant. Her passion and belief that the key to improving care is through profound education, led her to qualify as Master Practitioner Spark of Life in November 2013.





Speakers

Sandy Crowe Continued....

Restoring Dormant Language Through Listening with the Heart.

Sandy's presentation will focus on how therapeutic listening at a profound level is a core communication skill that facilitators of the Spark of Life Club Program learn to develop. Sandy will share some stories of outcomes, specifically in regard to restoring dormant language, for her clients with dementia from this program. She will share some inspiring case studies to demonstrate some of the possibilities when one truly listens with the heart, bringing her presentation alive with photos and video footage.



Anna Tang

When I Grow Too Old To Sing

Anna Tang has a passion for music at her early age. After finishing her undergraduate degree of Music at Chinese University of Hong Kong and obtaining an Associate Diploma in Recital Solo Piano (Trinity College of Music), she studied Master of Music Therapy at University of Queensland and graduated as a Registered Music Therapist in 2011. Anna specializes in working with Aged Care organisations, nursing homes and has had her own private practice in WA since 2012. Besides music, Anna is also trained as a hospital chaplain at Pastoral Care Education from Royal Perth Hospital. Anna believes that the professional use of music can enhance the quality of life for others, especially in the education and community sector.

"Throughout my music therapy work, I often come across clients who have said to me: "I used to sing in a choir but I can't sing anymore". This presentation illustrates stories of older people with dementia who are still able to engage in active music making which can alleviate some of their challenging behaviors, such as agitation, low motivation and social interaction, and seeking attention for unmet emotional needs. A proper definition of Music Therapy according to the Australian Music Therapy Association (AMTA) will be given and how music therapists work in actual settings will be discussed. As music therapy is aiming to enhance individuals' quality of life through the use of music, common goals and objectives for high care, low care and dementia care are presented. Focusing on different stages of dementia, the use of music therapy skills and approaches are varied. The case vignettes demonstrate the importance of person-centered approach and how professional use of music addresses the physical, mental and spiritual needs of older people with dementia. The focus on clinical application for the use of musical instruments and improvisation techniques is emphasised and practical skills such as vocal improvisation for relaxation will be illustrated."



Afternoon Workshop

Junkadelic

BRASS BAND

The **Junkadelic Brass Band** is a band like nothing else in Perth.

Blending Street rhythms with; New Orleans style jazz, Funk grooves, Latin flavours and hip-hop, the **Junkadelic Brass Band** is full of surprises – not the least of which is the awesome beats and rhythms from their recycled percussion section!

For the CECD Symposium 2015, Ken Allen and his team will conduct an instrument making workshop and then invite you to join them with your instrument for a jam session at the end! This workshop is guaranteed to replenish the spirit, inspire and bring out the creativity and ability to improvise in all participants. Ken will show how the skills presented can be adapted to all clients, including older people with different levels of dementia.





Sponsors

Gold

Mad Mex Fresh Mexican Grill



125 St Georges Terrace
Perth WA 6000
(08) 9428 6400

Shop 31
Sorrento Quay Boardwalk
Hillarys Boat Harbour WA 6025
(08) 9447 7444

Silver



Hyatt Regency Perth
99 Adelaide Terrace
Perth WA 6000
(08) 9225 1234
perth.regency.hyatt.com



Metro Beverages Co
MBC is an independent wholesaler of non-alcoholic beverages. MBC's unique portfolio of beverages includes a diverse mix of both Australian made and imported products.



Jeremy's Exclusive Butchery
131 Claremont Crescent
Swanbourne WA 6010
113 Brighton Road
Scarborough WA 6019



Central Institute of Technology Bookstore
30 Aberdeen St,
Northbridge WA 6003
www.central.wa.edu.au



The Sebel Hotel Mandurah
1 Marco Polo Drive
Mandurah WA 6210
(08) 9512 8300
www.thesebel.com



Cushman Albert Rice
'Investment and Services'
• Tax minimisation
• Mortgage reduction
• Secure investments

Bronze



Bakers Delight
Shop 15
Central Shopping Centre
Kalamunda WA 6076



Waldecks Bentley
75 Manning Road
Bentley WA 6120
08 9458 5944



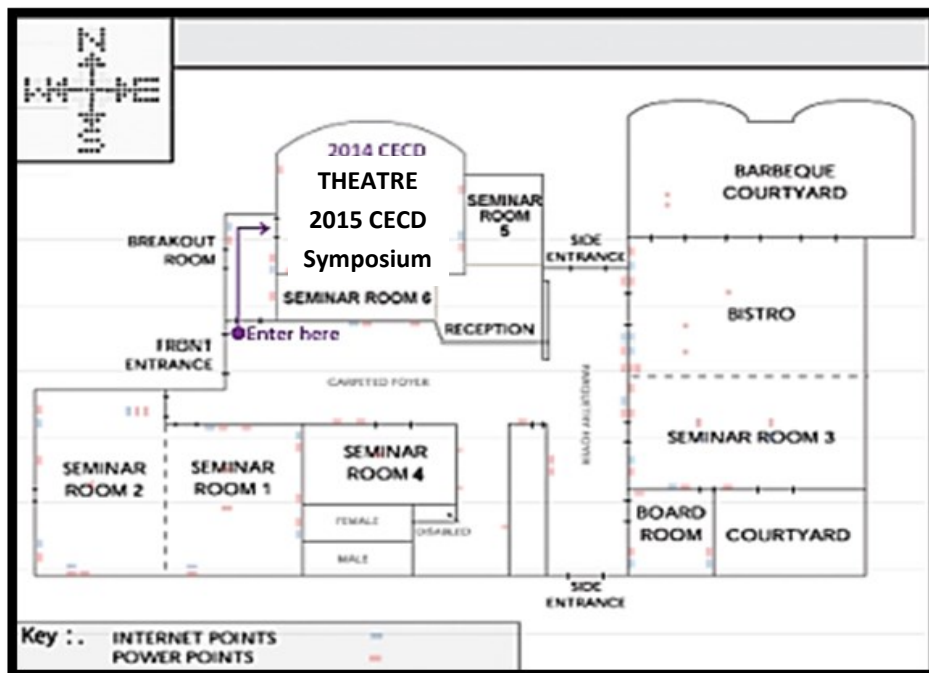
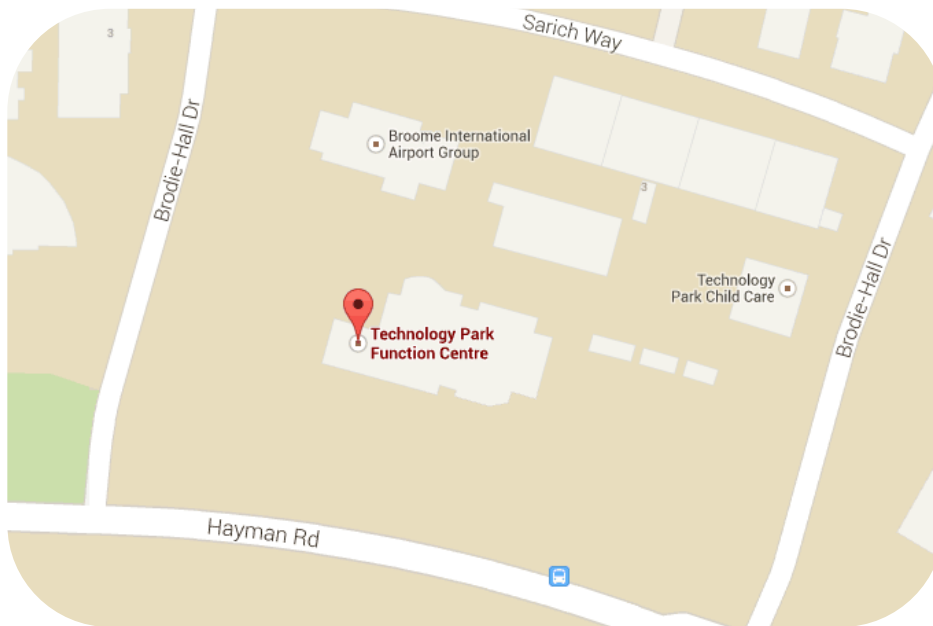
Homecraft Textiles
1039 Albany Hwy
St James WA 6102
08 9355 4222





Venue

Technology Park Function Centre is located at 2 Brodie-Hall Drive in Bentley across the road from the State Hockey Arena. The symposium will be held in the Theatre Room. Access to the car park is either from Brodie-Hall Drive or Hayman Road. There is a free car park with bays available for people with disabilities.





Organisers

The CECD Symposium 2015 has been organised and managed by Commerce Portfolio students from Central Institute of Technology, Northbridge.



central
INSTITUTE OF TECHNOLOGY

Diamond Event Management

Lecturer - Jo Marshall

Ana Carolina Muriel Henao	Gagan	Pamela Tenardi
Ankit	Husni Athaullah	Sandra Nguyen
Ayjay Abuy	Laura Garcia	Steve Lee
Chie Nonaka	Sabrina Tse	Thai Chheouy
Tam Truong	Mandy Alizadeh	Thelma Hannon
Esha Bhattacharya	Michelle Geiles	Vicky Qiao
Eshan Sakhi	Michelle Hoggett	Yuriko Ota

Helping Hands

Lecturer - Judy Hargrave

Armaan Arora	Manish Kumar	Sam Liu
Arvinder Kaur	Maria Jones	Sawan Kumar
Claire Reid	Mariana Costa	Sourav Rattu
Daniel Reed	Nathan Tulip	Todd Young
Harkawalpreet Singh	Nicolas Saavedra	Victor Wieczorek
Jaanus Leinpere	Oliver Bywater	William Phelps
Jiei Oshiro	Philipp Stratemann	Xiuxiu Li
Karan Devgan	Rohitdeep Singh	
Klem Nazier	Romain Garrick	

Email: symposiumaustralia@hotmail.com

The Society for the Arts in Dementia Care (Australia) Inc.

CECD

Creative Expression, Communication and Dementia

www.cecd-society.org

artsindementiacare@hotmail.com

